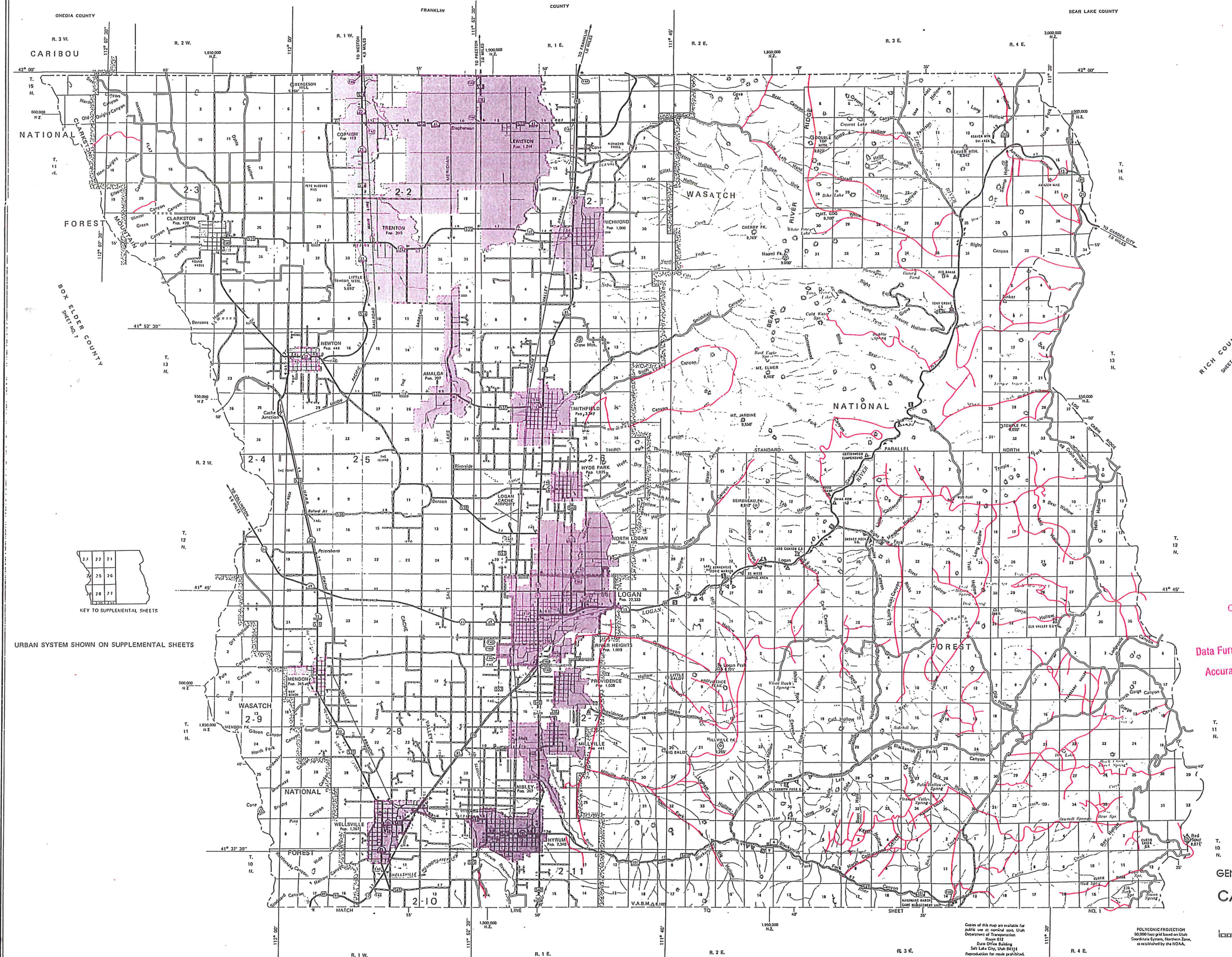


I D A H O



ONEIDA COUNTY
FRANKLIN COUNTY
BEAR LAKE COUNTY
CARIBOU
FOREST
NATIONAL
WASATCH
RICH COUNTY

KEY TO SUPPLEMENTAL SHEETS

24	27	21
25	26	
28	27	

URBAN SYSTEM SHOWN ON SUPPLEMENTAL SHEETS

CLASS "D" ROAD SYSTEM
1978
Data Furnished by Local Governmental Agencies
Accuracy and Validity Not Checked by UDOT



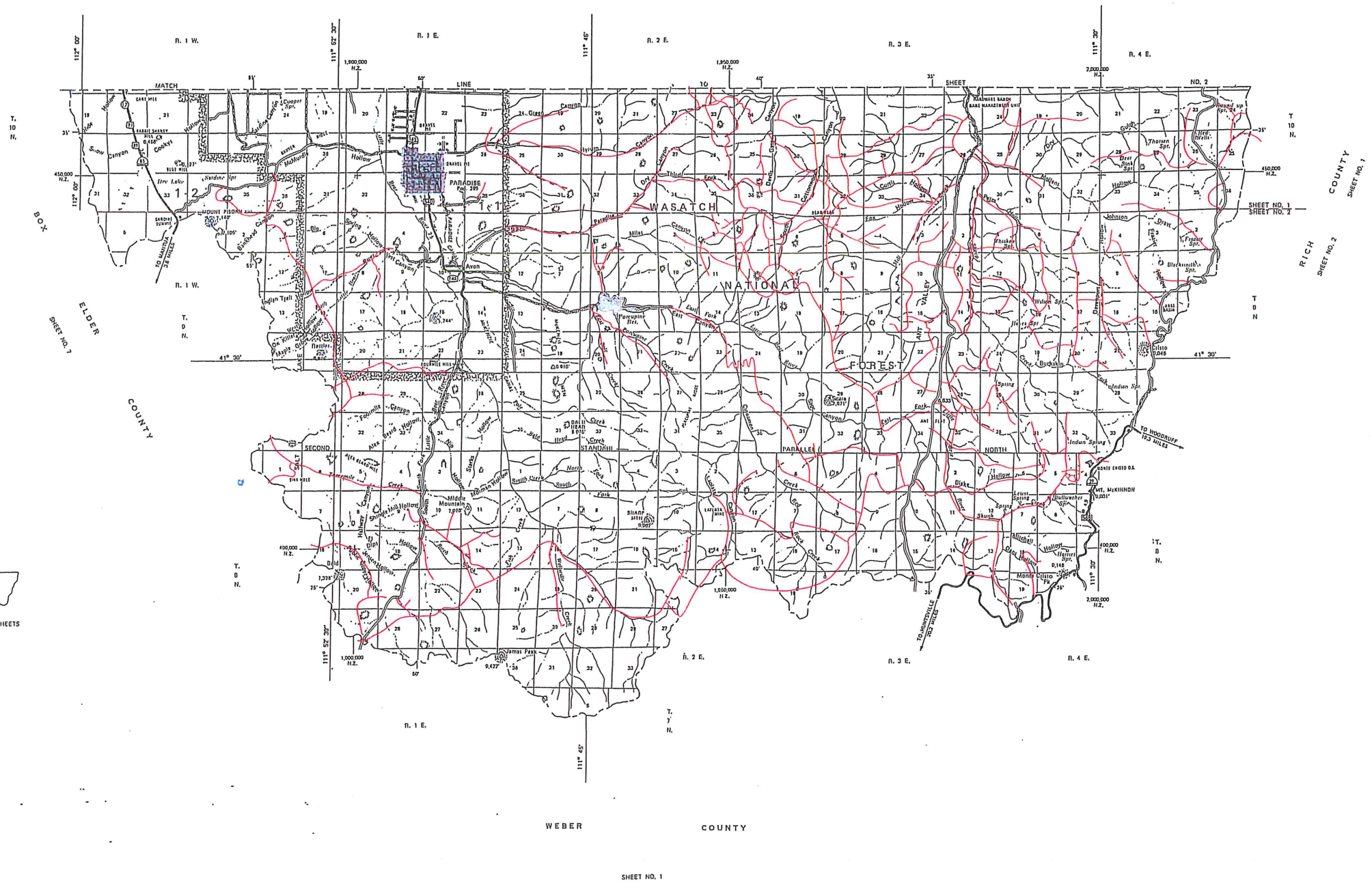
GENERAL HIGHWAY MAP
CACHE COUNTY
UTAH
SCALE
1975

Copies of this map are available for public use at nominal cost, Utah Department of Transportation, Room 812, State Office Building, Salt Lake City, Utah 84143. Reproduction for resale prohibited.

POLYCONIC PROJECTION
63,000 foot grid based on Utah Coordinate System, NAD83 Zone, as established by the NOAA.

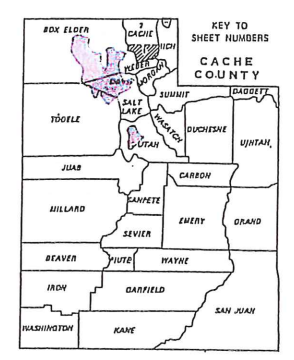
SHEET NO. 2 OF 2 SHEETS AND 11 SUPPLEMENTAL SHEETS

GENERAL HIGHWAY MAP APPROVED: JULY 9, 1978



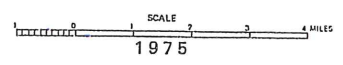
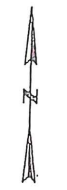
CLASS "D" ROAD SYSTEM
1978
Data Furnished by Local Governmental Agencies
Accuracy and Validity Not Checked by UDOT

Copies of this map are available for public use at nominal cost, Utah Department of Transportation, Room 812, State Office Building, Salt Lake City, Utah 84114. Reproduction for resale prohibited.



GENERAL HIGHWAY MAP CACHE COUNTY UTAH

PREPARED BY THE
UTAH DEPARTMENT OF TRANSPORTATION
TRANSPORTATION PLANNING DIVISION
PLANNING STATISTICS SECTION
IN COOPERATION WITH THE
U.S. DEPARTMENT OF TRANSPORTATION
FEDERAL HIGHWAY ADMINISTRATION



GENERAL HIGHWAY MAP APPROVED: JULY 9, 1978

Class D roads are represented as red lines on these maps. Class D road data was prepared by the respective county and submitted to UDOT, whereupon they were scribbled by UDOT on its own series of General Highway Maps as required in Utah Annotated Code, Title 27, Chapter 15. UDOT is not responsible for the original validity of Class D road data.